

MAKING OUR MONEY GO FURTHER

The Monthly Newsletter for the Making Our Money Go Further project

WHAT HAVE WE BEEN UP TO?

CONTINUED TO PROMOTE & GROW OUR FACEBOOK PAGES – [ANSTON](#), [CANKLOW](#), [EASTWOOD](#), [MALTBY & HELLABY](#), [MASBROUGH](#), [RAWMARSH](#), [ROTHERHAM](#), [SWINTON & KILNHURST](#) & [WATH](#) NOW WITH OVER 860 FOLLOWERS

OPENED **BOOKINGS** FOR OUR NEXT **IN PERSON PERSONAL INDEPENDENCE PAYMENT (PIP) GROUP WORKSHOP ON 23RD AUGUST**

ATTENDED **GREASBRROUGH GALA DAY & WOW FESTIVAL ROTHERHAM**

SUPPORTED THE **RAWMARSH ALLOTMENT GROUP VOLUNTEERING DAY & THE SWINTON UNIFORM DRIVE**

RAN **MAKING OUR MONEY GO FURTHER SESSIONS AT GROUPS AND NEIGHBOURHOOD CENTRES**

ATTENDED **CLIFTON LEARNING PARTNERSHIP TO TALK TO PEOPLE ABOUT THE PROJECT**

MAKING OUR MONEY GO FURTHER

ROTHERHAM FEDERATION
AND CITIZENS ADVICE ROTHERHAM WORKING TOGETHER

Cost of Living Support 2022

The government has announced the following support to help households with rising energy bills and living costs:

Energy Bills Support Scheme. All households with an electricity connection will receive a £400 discount this autumn.

Cost of Living Payment. Households receiving certain benefits between 26 April 2022 to 25 May 2022 may be eligible for a payment of up to £650.

Pensioner Cost of Living Payment. People born on or before 25 September 1956, may be eligible for a one-off payment of £300.

Disability Cost of Living Payment. You may be eligible for a one-off payment of £150 if you are on certain benefits.

The Household Support Fund allows councils to give small grants to help vulnerable households.

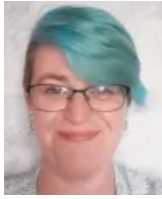
Here are the links to some other great resources you can access too for help and support including the [Making Our Money Go Further](#) project, which is a partnership with Citizens Advice Rotherham & District.

MoneyHelper [Managing your money in uncertain times](#)

Citizens Advice [What you can do if you are struggling to make ends meet](#)

National Debtline [Dealing with high gas and electricity bills](#)

SAY HELLO TO



Hi, I'm Ffion the new volunteer support worker for the befriending phone call service at Rotherfed. I would like to start off by saying a huge thanks to all of my colleagues for the warm welcome and all the help, you are all wonderful people.

Before starting in my new role at Rotherfed I was a volunteer doing the befriending phone calls, and a stay at home mum to my two small children. I have been a stay at home mum since having my children and found that I'd lost my identity as a person that wasn't just a mum and wife. Becoming a volunteer was one of the best choices I'd ever made, I had a purpose that helped people outside of my immediate family.

Doing the befriending phone calls got me talking to people about a wide range of subjects and talking to people from all sorts of back grounds. I have spoken with all ages ranging from 20 year olds to 95 year olds with one basic need in common, they all want someone to talk to.

We are now looking for new volunteers to carry on doing the vital work we do. Anyone who has any spare time that would be interested, has the potential for making the world of difference to someone's day. I believe that simple human contact and socialising are part of the basic building blocks of day to day life and this project is doing an amazing job at offering that opportunity to those who may struggle otherwise. Believe me, it is an amazing thing to do and before long you'll wonder just how you got on with your own life before becoming a volunteer. It is the greatest and it is something anyone of any age can do. So, if this sounds like something you'd like to do, just get in touch – you can make a real difference!!!

To find out more about becoming a befriending volunteer please email ffion.whitehead@rotherfed.org or call 07534943658

"You've made my day you have"

"The WOW Rotherham team thank you for being part of the first WOW Rotherham."

WHAT'S COMING UP THIS MONTH?

Please check our Facebook pages for details:

August -

1st - [Yorkshire Day](#).

2nd - MOMGF @ [Catch Up Cafe](#), Rotherham Minster

3rd - MOMGF @ [Shiloh Drop In](#)

3rd - [National Play Day](#).

4th - MOMGF @ [Rotherham Foodbank](#)

5th - MOMGF/EKH @ [Pottery Pond](#) Teddy Bear's Picnic

6th - MOMGF/EKH @ [Aston Carnival](#)

8th - MOMGF/EKH @ [Kilnhurst Information Roadshow](#)

8th - [National Allotment Week](#)

9th - MOMGF @ [Maltby Foodbank](#)

11th - MOMGF @ [Social Supermarket / Ferham Festival](#)

16th - MOMGF @ [Rotherham Foodbank / Brecks](#)

[Community Hub](#)

17th - MOMGF @ [Shiloh Drop In](#)

18th - [Rotherfed](#) Summer themed coffee morning

23rd - [PIP in person workshop](#)

24th - MOMGF @ [Social Supermarket](#)

25th - MOMGF @ [Over 50's Youth Club Wickersley](#)

29th - August Bank Holiday

MOMGF = Making Our Money Go Further

EKH = Energy Know How

If you'd like to get involved in community led groups or are already part of a group where you would like us to come along to do a presentation about our project we'd love to hear from you.

Perhaps you have a money saving idea that you want to share with others, or already have a group set up with your friends that you would like to roll out to the wider community? However small or big the idea we are here to help you if you need us.

To get involved please complete our Expression of Interest form: <https://cutt.ly/Ujn3EPG>



SCAN ME

If you have any suggestions about items to include in future issues please let us know.

Thank you for reading this newsletter.

FIND OUT MORE

So, if you want to find out more about this project, get involved and discover how to manage your money better, then contact us on:

01709 368515

info@rotherfed.org

Find us on Facebook
[/rother.fed](https://www.facebook.com/rother.fed)



Rotherham Federation of Communities Ltd. Charity number: 1158600. Company number: 5913521



Charity No: 1158600
Company No: 5913521

